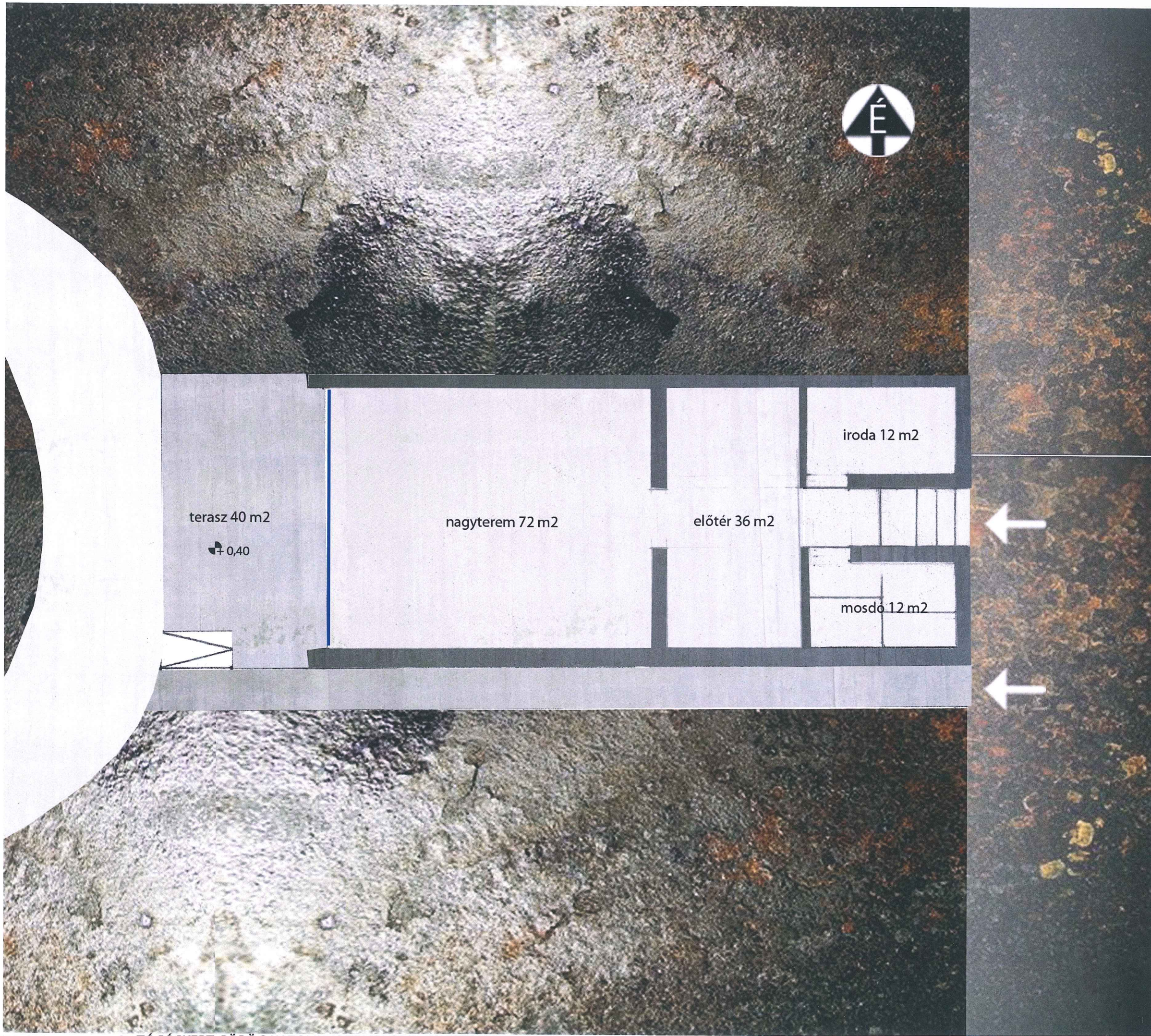


32 *Olmos + Pili*

27,00





terasz 40 m2

+0,40

nagyterem 72 m2

előtér 36 m2

iroda 12 m2

mosdó 12 m2



32

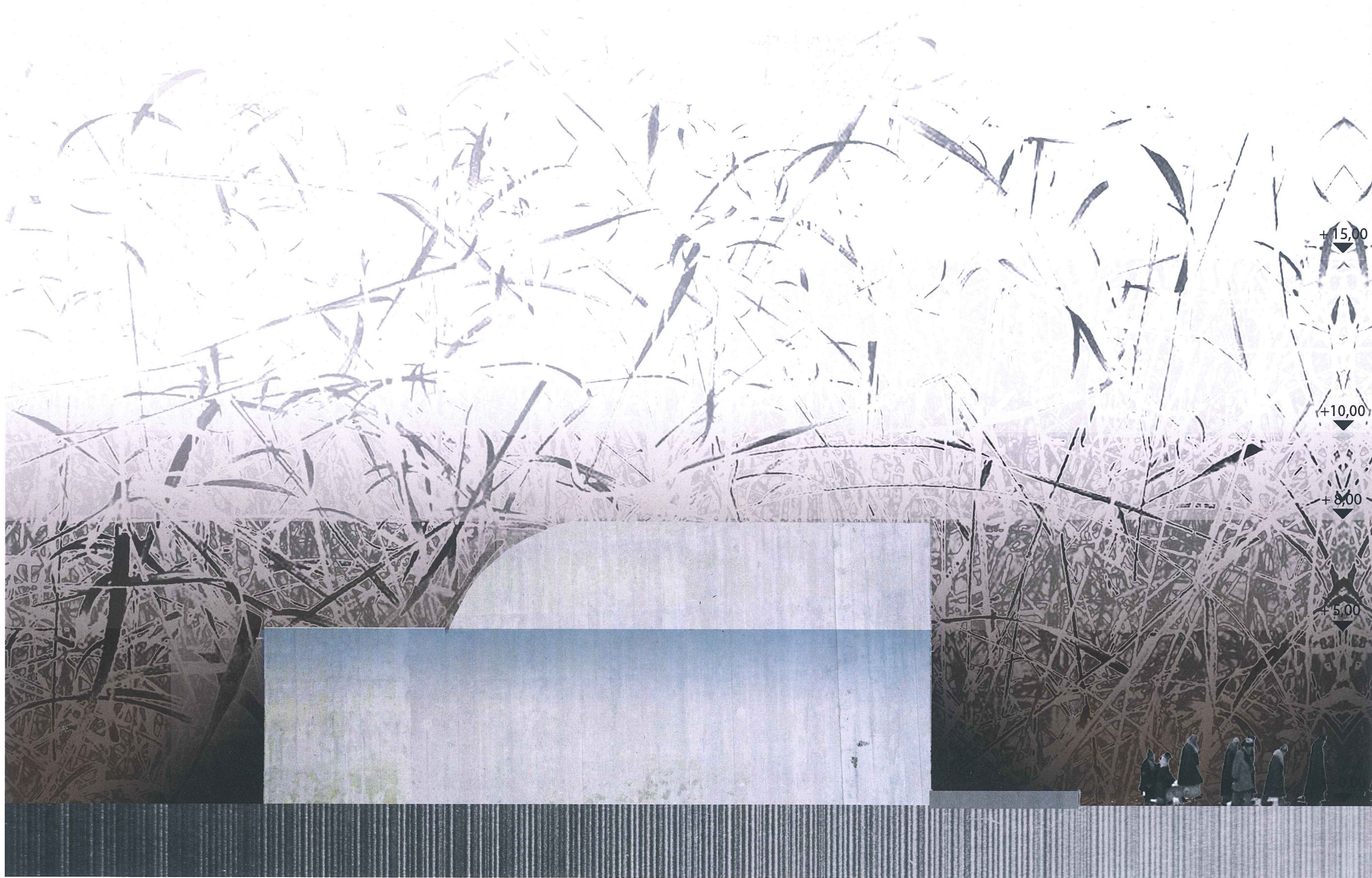
+ Jili

Ohm

Pegly







3 - TÓCÓSKERT GÖRÖG KATOLIKUS TEMPLOM - ÉSZAKI HOMLOKZAT M = 1:100

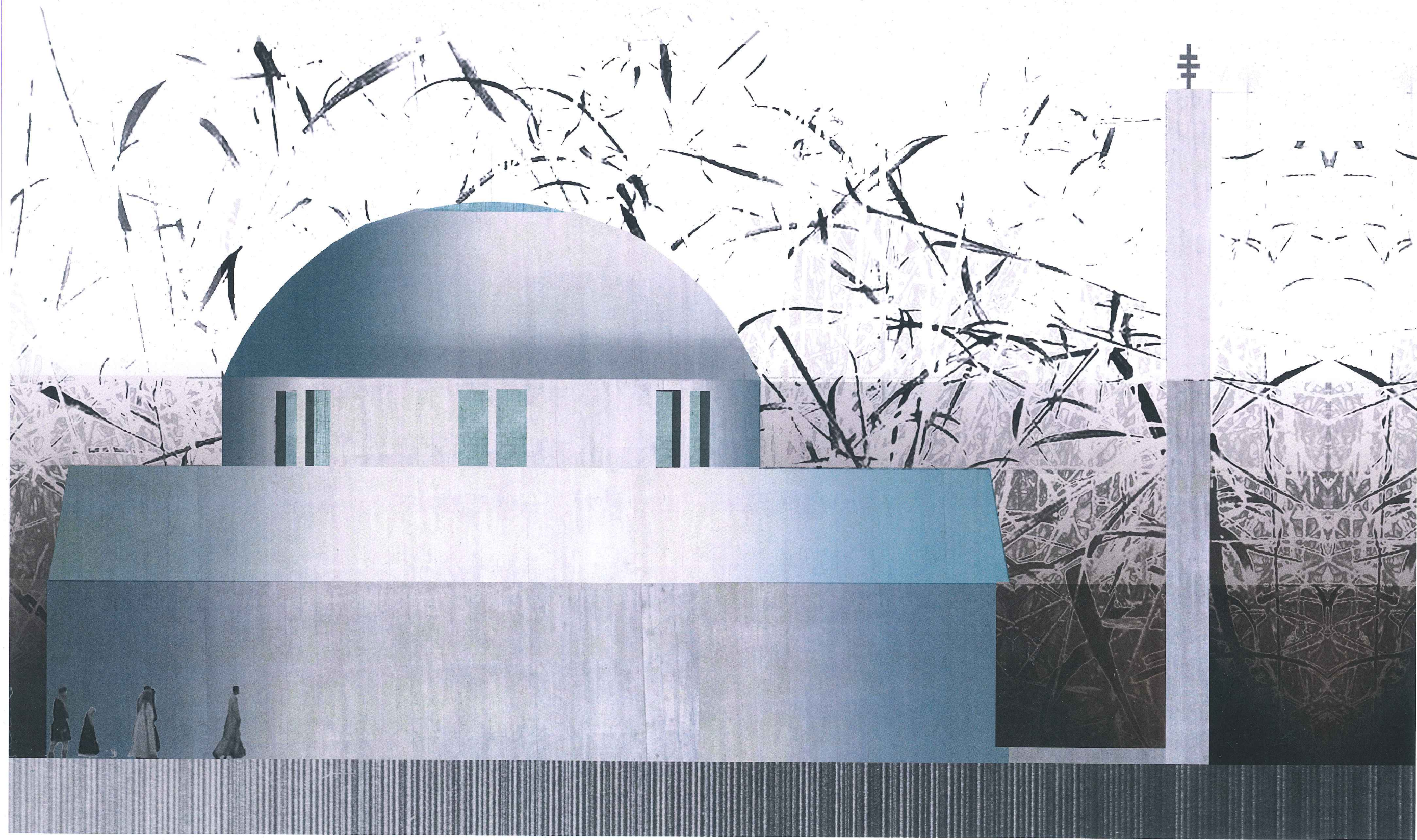
+ Jüli

Olman  
F. Pelyh

32

Mur





4 - TÓCÓSKERT GÖRÖG KATOLIKUS TEMPLOM - ÉSZAKI HOMLOKZAT M=1:100

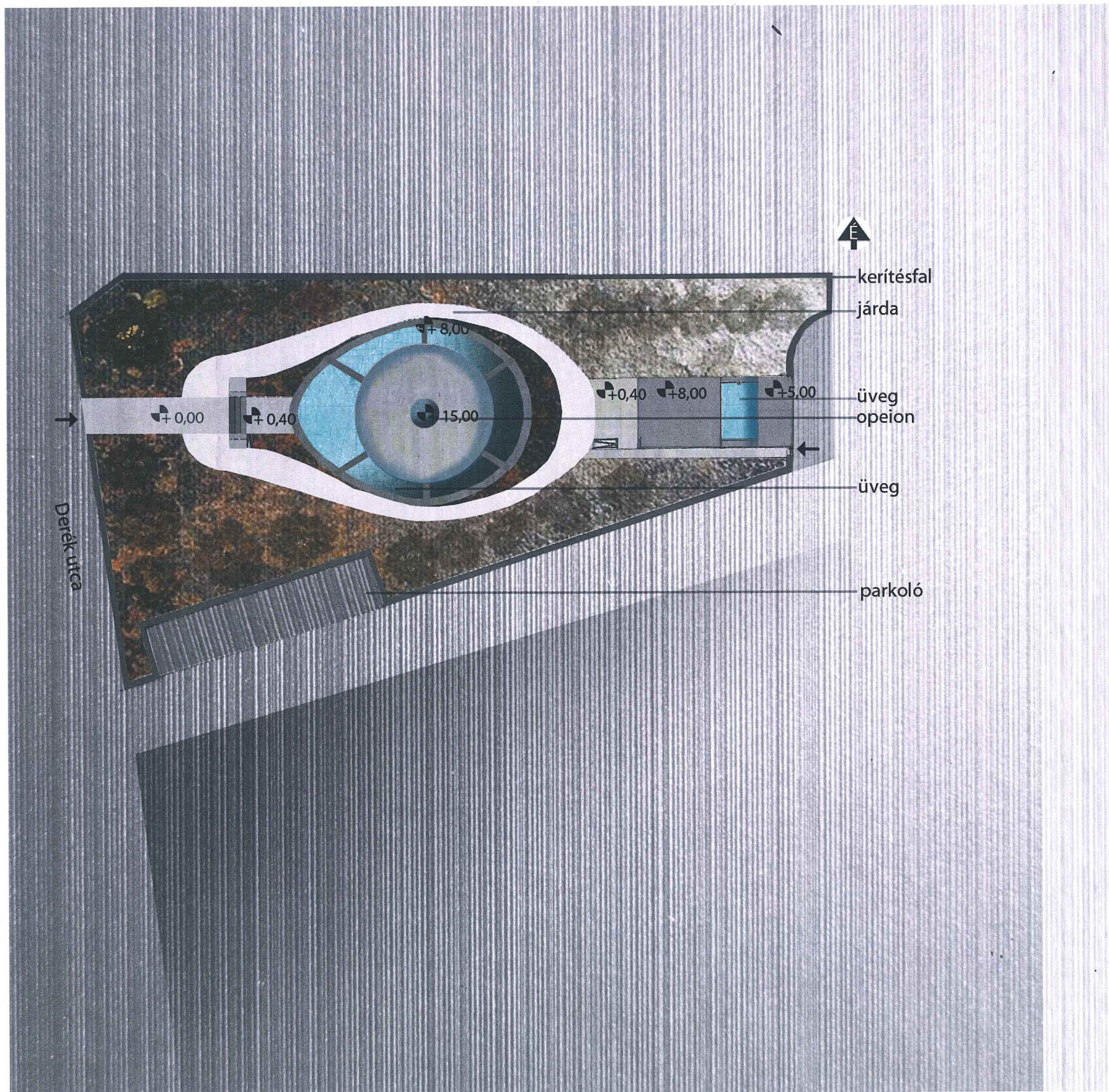
*Handwritten signature*

32

*Handwritten signature*

*Handwritten signature*





BELSŐ NÉZET

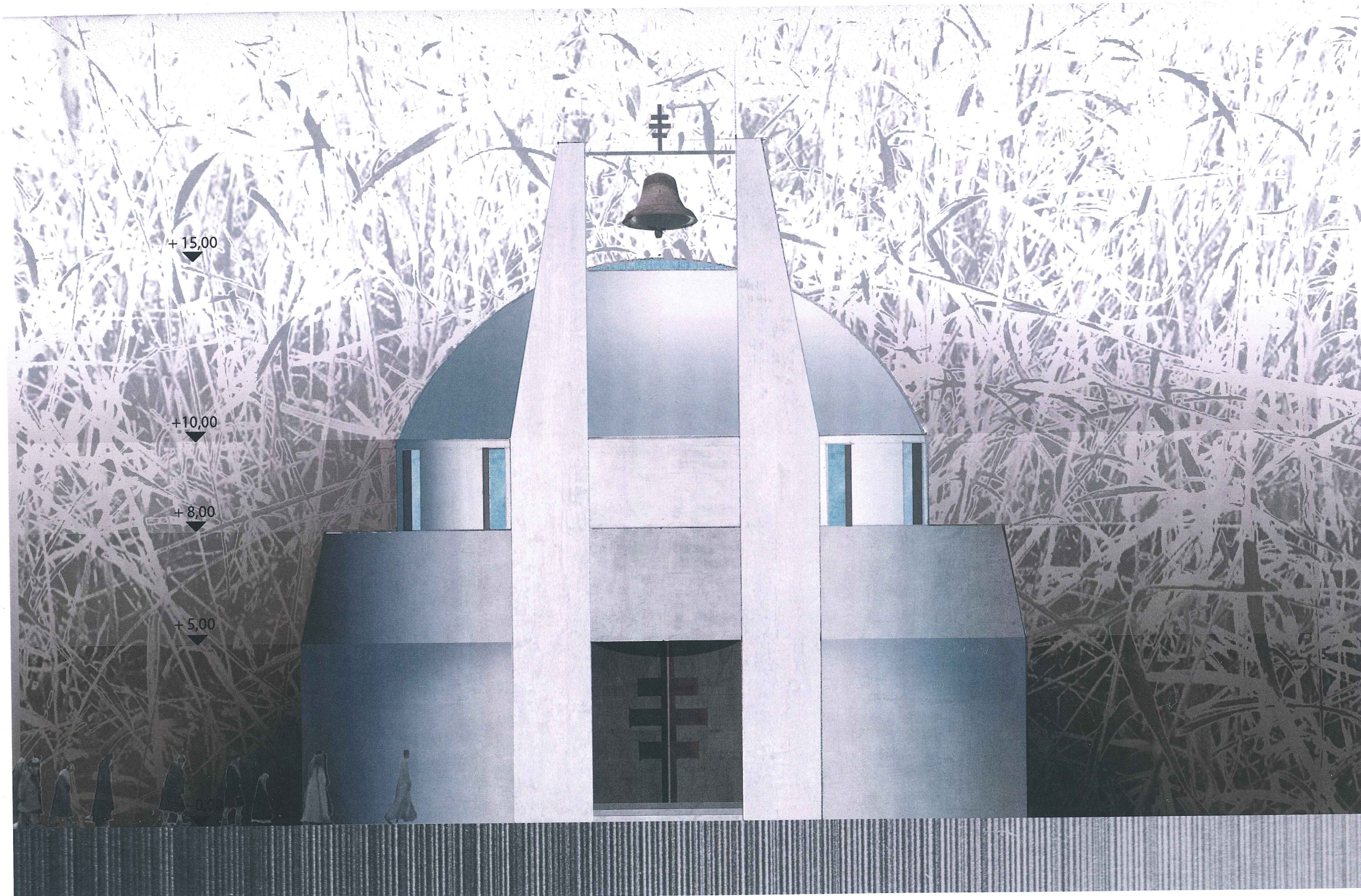


PERSPEKTÍVA

5 - TÓCÓSKERT GÖRÖG KATOLIKUS TEMPLOM - HELYSZÍNRAJZ M = 1:500

Handwritten notes in blue ink: '+ Tócskerti', a signature, and a circled number '32'. There are also some illegible scribbles and the word 'Peggy' at the bottom right.





6 - TÓCÓSKERT GÖRÖG KATOLIKUS TEMPLOM - NYUGATI HOMLOKZAT M = 1:100

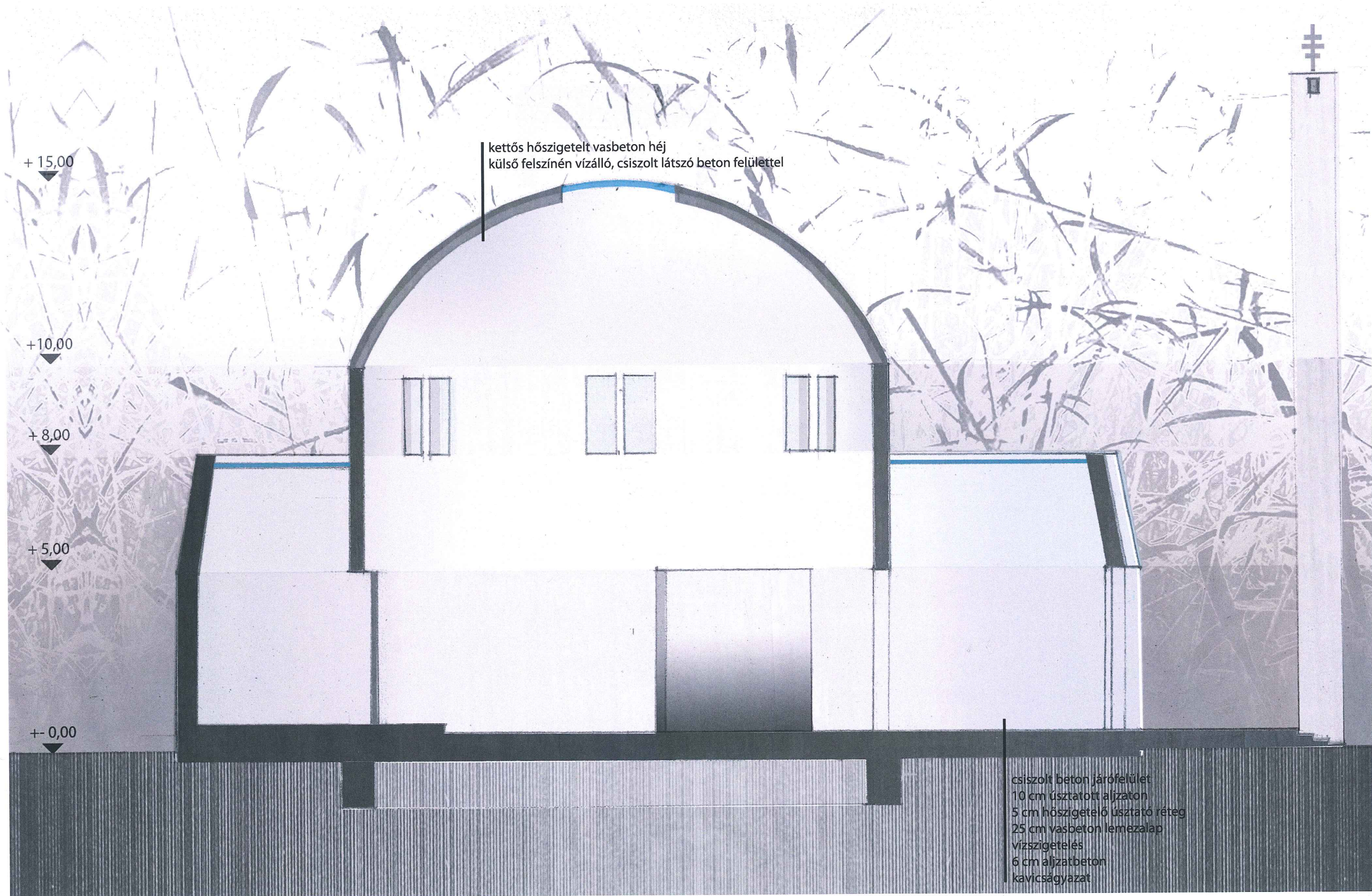




7 - TÓCÓSKERT GÖRÖG KATOLIKUS TEMPLOM - KELETI HOMLOKZAT M = 1:100

Handwritten notes and signatures in the bottom right corner, including a circled number 32 and the name Jili.





8 - TÓCÓSKERT GÖRÖG KATOLIKUS TEMPLOM - HOSSZMETSZET M=1:100

*+ felülről*

32

*Handwritten signatures and initials in blue ink.*